

Lambda DNA/*Hind* III Marker DNA Molecular Weight Markers

[Cat. No.]
D-1050

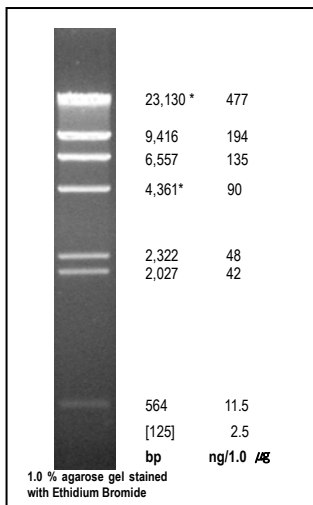
[Lot No.]
0602

[Volume]
500 μl

[Concentration]
200 ng/ μl

● **Description** : Lambda DNA / *Hind* III Marker is designed for determining double strand DNA from 125 to 23,130 base pairs. The Marker is prepared by digesting Lambda DNA to completion with *Hind* III, followed by phenol inactivation of the enzyme.

● **Application** : Size confirmation of DNA fragments.



● **Features**

- ready-to-use
- Recommended Loading : 2.5 μl /5 mm lane width
- Typical Loading Number of Lanes : 200 (5 mm lane width)
- Range (bp) : 125 – 23,130
- Number of Bands: 8

● **Storage Buffer**

- 10 mM Tris-HCl (pH 8.0)
- 1 mM EDTA
- 2.5% Ficoll
- 0.005% Bromphenol Blue
- 0.005% Xylene Cyanol

● **Storage Condition**

This product is shipped on dry ice and should be stored at -20°C until use.

● **Quality control assay** : Agarose gel analysis shows that 7 bands are clearly distinguishable.

● **Note**

- The DNA ladder can be applied directly onto an agarose gel.
- The cohesive ends (indicated *) of the 12 nt *cos* site of bacteriophage lambda may anneal and form an additional band. These fragments can be separated by heating at $60\sim 65^{\circ}\text{C}$ for 5 min and then cooling on ice for 3 min.

● **Ordering Information**

[Related BIONEER DNA Molecular Weight Marker Products]

| Cat. No. | Products |
|----------|--|
| D-1020 | 25/100 bp Mixed DNA Ladder, 250 μl |
| D-1030 | 100 bp DNA Ladder, 250 μl |
| D-1040 | 1 Kb DNA Ladder, 500 μl |
| D-1050 | Lambda DNA / <i>Hind</i> III Markers, 100 μg |
| D-1060 | Lambda DNA / <i>Eco</i> R I Markers, 100 μg |
| D-1070 | Lambda DNA / <i>Eco</i> R I + <i>Hind</i> III Markers, 100 μg |
| D-2510 | Lambda DNA, 250 μg |

Note

For research use only. Not for use in diagnostic or therapeutic procedures.