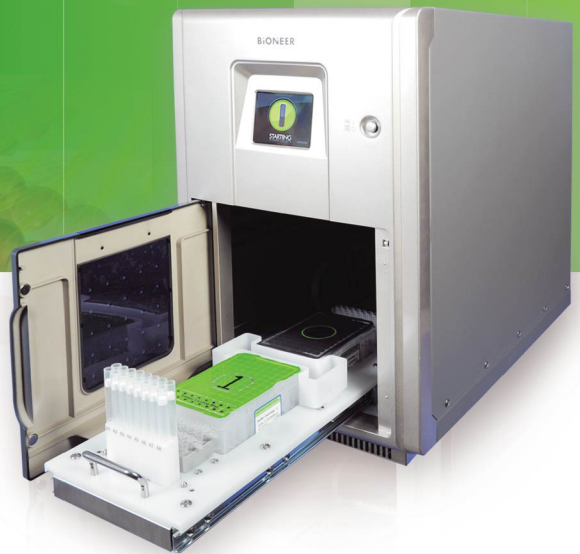
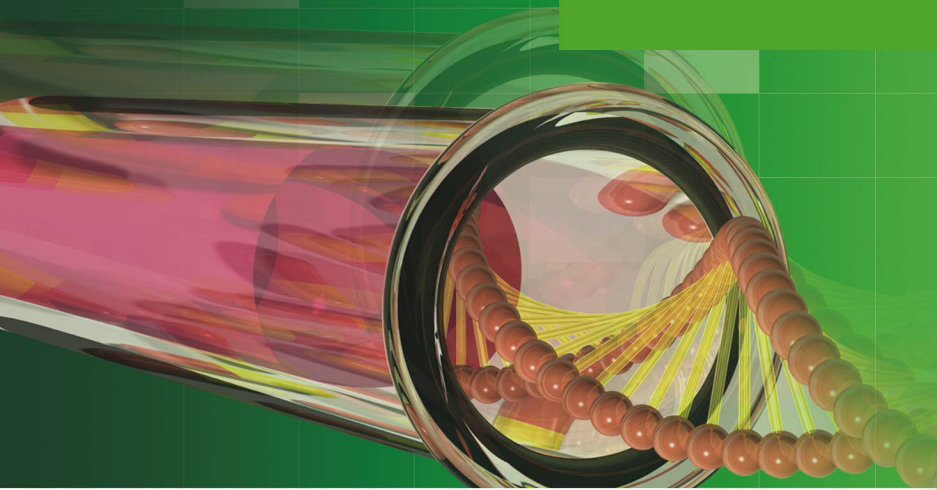


ExiPrep™ 16Plus

Automated Nucleic Acid Extraction System



Essential Functionality, Enhanced Performance ▶▶

Easy Installation, Easy-to-Use, Easy-to-love.

Why ExiPrep™ 16Plus? ●●●

- Walk-away automation
- Pre-programmed methods: simply "Plug-and-Purify"
- Cost/sample equivalent to manual methods

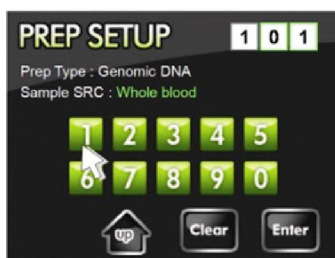
Easy-to-use Touchscreen

The 3.5" touchscreen maximizes efficiency by offering an intuitive interface for operation such as selecting protocols and controlling the UV sterilization lamp.



Pre-programmed Protocols

ExiPrep™ 16Plus has pre-programmed protocols optimized for the target nucleic acid and clinical sample type. The system allows for up to 990 unique protocols, allowing for optimal extraction conditions and outstanding reproducibility.



Automatic UV-lamp Sterilization

The UV sterilization lamp can be set to sterilize the instrument chamber before and after extraction runs, therefore eliminating any concern of inter-assay cross-contamination.

Proprietary Silica Magnetic Beads

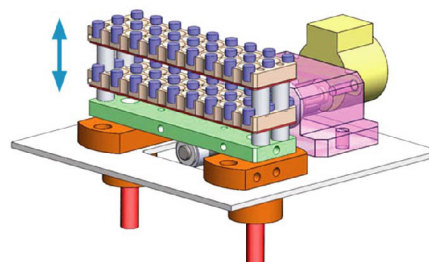
The silica magnetic beads in our extraction kits were specially developed to maximize DNA/RNA binding efficiency, allowing for maximum recovery. (Patent Pending)

Built-in Contamination Shield

Sits beneath the pipette tips when the ExiPrep™ 16Plus is moving across the plate - eliminating the possibility of intra-assay cross-contamination.

Built-in Heating & Magnetic Block

The ExiPrep™ 16Plus includes a dual-purpose heating/magnetic block. The heating increases sample lysis efficiency and therefore maximizes extraction yield and purity. The magnetic block allows the beads to bind with greater affinity without well-to-well movement, increasing bead concentration and therefore binding surface area for maximal nucleic acid recovery.

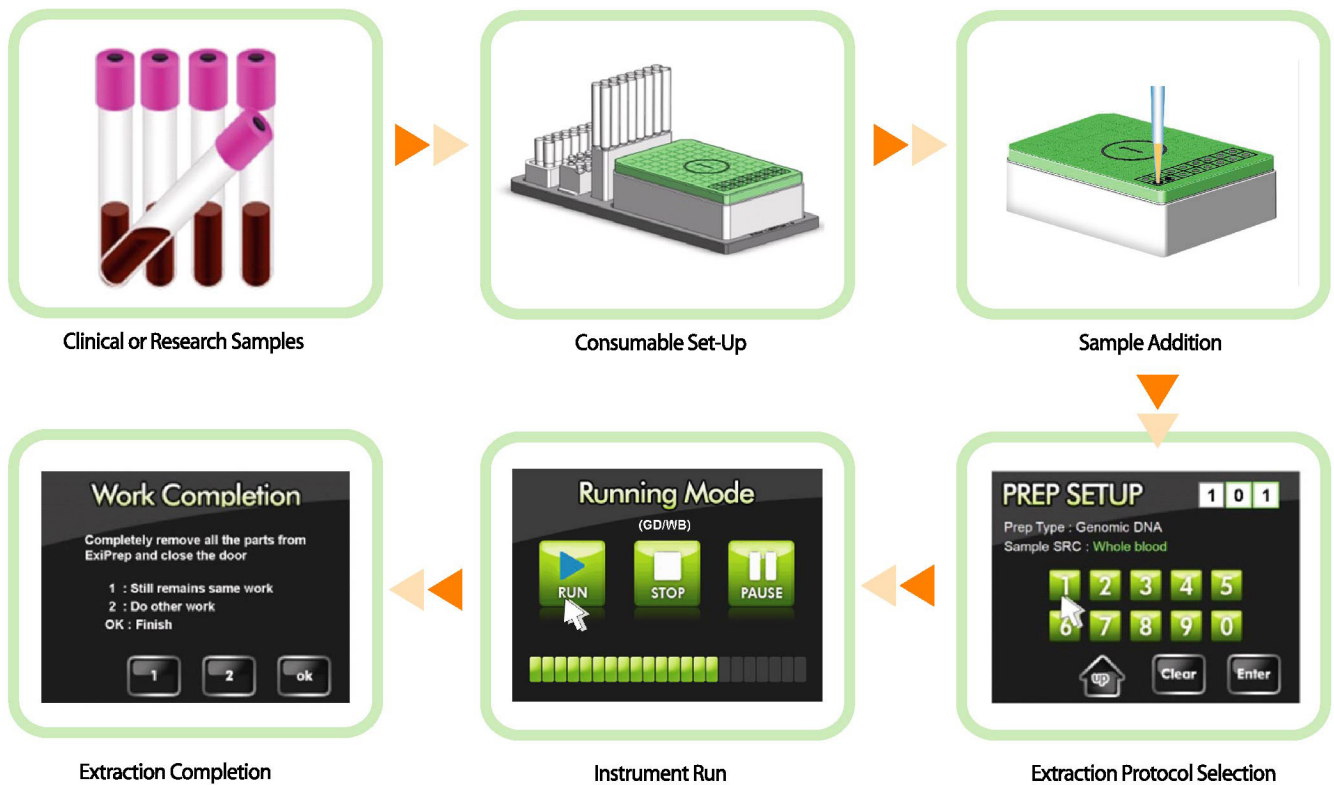


Automated DNA/RNA Purification

Why ExiPrep™ 16Plus? ●●●

- Plug-and-Play installation and operation
- From sample to pure DNA/RNA in 60 minutes
- Increased productivity, reproducibility, and reliability
- Compact & space saving model

ExiPrep™ 16Plus Workflow



Applications

- **University and Corporate Laboratories:** Nucleic acid extraction and protein purification from various samples
- **Hospital/Clinic Laboratories:** Nucleic acid extraction from blood, tissue, sputum etc. for various molecular diagnostic tests
- **Food companies:** Preparation of food samples for GMO or contamination testing
- **Military, Police:** Sample preparation for bio-defense detection of various bacteria and viruses
- **Public Health Offices:** Sample preparation for public health threats such as STDs and tuberculosis

Experimental Data

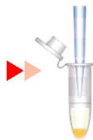
1. Genomic DNA/ Cultured cell (HeLa)

- Sample volume: 1×10^6 cells
- Protocol number: 107
- Total prep time: < 1hr.
- Average yield: 4-8ug

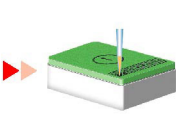
• Procedure



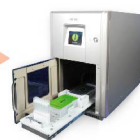
Cell culture



Sampling

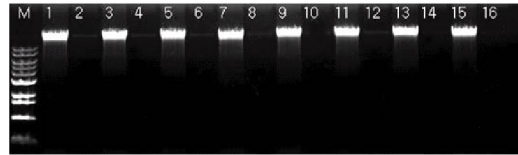


Sample loading



Genomic DNA Extraction

• Agarose gel analysis



Lanes 1,3,5,7,9,11,13,15 were extracted with 1×10^6 cells of cultured HeLa cell and Lanes 2, 4, 6, 8, 10, 12, 14, 16 were extracted with ddH₂O as a negative control in DNA extraction. Note all samples have very similar yields. Purity was also tested and was consistently between 1.8 and 2.0 (not shown).

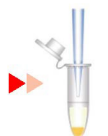
2. Genomic DNA/ Bacteria (*E.coli*)

- Sample volume: 1×10^6 cells
- Protocol number: 109
- Total prep time: <1 hr
- Average yield: 8-12ug

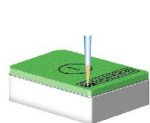
• Procedure



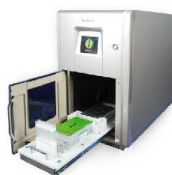
E.coli culture



sampling



Sample loading



Genomic DNA Extraction

• Agarose gel analysis



Lanes 1,3,5,7,9,11,13,15 were extracted with 1×10^6 cells of *E.coli* cells and Lanes 2, 4, 6, 8, 10, 12, 14, 16 were extracted with ddH₂O as a negative control in DNA extraction. Note all samples have very similar yields. Purity was also tested and was consistently between 1.9 and 2.0 (not shown).

3. Genomic DNA/ Plant Tissue (Spinach leaf)

- Sample volume: 100mg
- Protocol number: 104
- Total prep time: <1 hr
- Average yield: 3-5ug

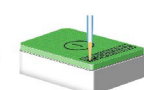
• Procedure



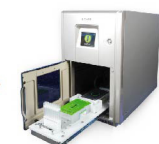
Homogenization



Incubation

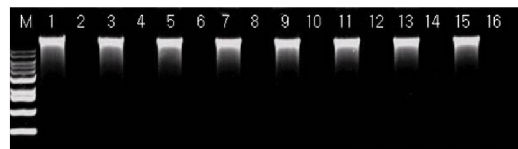


Sample loading



Genomic DNA Extraction

• Agarose gel analysis



Lanes 1,3,5,7,9,11,13,15 were extracted with 100mg of spinach leaves and Lanes 2,4,6,8,10,12,14,16 were extracted with ddH₂O as a negative control in DNA extraction. Note all samples have very similar yields. Purity was also tested and was consistently between 1.9 and 2.0 (not shown).

Related Products

Kit	Cat. No.	Sample Sources
Genomic DNA		
<i>ExiPrep</i> ™ Blood Genomic DNA Kit (96 preps)	K-3215	Whole Blood (200 ul) Buffy coat (200 ul) Urine (200 ul)
<i>ExiPrep</i> ™ Tissue Genomic DNA Kit (96 preps)	K-3225	Liver, Lung, Kidney, Spleen (25 mg) Mouse tail (1.0 cm) Rat tail (0.5 cm)
<i>ExiPrep</i> ™ Cell Genomic DNA Kit (96 preps)	K-3235	Cultured Cell (1X10 ⁶ cells) Yeast (1X10 ⁶ cells) <i>E. coli</i> (1X10 ⁶ cells)
<i>ExiPrep</i> ™ Bacteria Genomic DNA Kit (96 preps)	K-3245	Gram (-) bacteria (1X10 ⁶ cells) Gram (+) bacteria (1X10 ⁶ cells)
<i>ExiPrep</i> ™ Plant Genomic DNA Kit (96 preps)	K-3255	Plant tissue (25 mg) Seed (25 mg)
Total RNA		
<i>ExiPrep</i> ™ Blood RNA Kit (96 preps)	K-3315	Whole Blood (200 ul) Buffy coat (200 ul) Urine (200 ul)
<i>ExiPrep</i> ™ Tissue RNA Kit (96 preps)	K-3325	Liver, Lung, Kidney, Spleen (25 mg) Mouse tail (1.0 cm) Rat tail (0.5 cm)
Viral DNA/ RNA		
<i>ExiPrep</i> ™ Viral DNA/ RNA Kit (96 preps)	K-3535	Serum & Plasma (200 ul) Urine, CSF and cell free body fluid (200 ul) Swabs

Coming soon...

Kit	Cat. No.	Sample Sources
Total RNA		
<i>ExiPrep</i> ™ Blood Total RNA Kit (96 preps)	K-3315	Whole Blood Buffy coat
<i>ExiPrep</i> ™ Tissue Total RNA Kit (96 preps)	K-3325	Liver, Lung, Kidney, Spleen Mouse tail Rat tail
<i>ExiPrep</i> ™ Plant Total RNA Kit (96 preps)	K-3355	Plant tissue Seed

ExiPrep™ 16Plus Nucleic Acid Extraction Kit Configuration



Disposable Filter Tip



0.5 ml Reaction Tube



Elution Tube



Buffer Cartridge

Specifications

Dimensions (W X H X D)	320 mm x 500 mm x 535 mm
Weight	18 kg
Temperature range	15-30 °C
Humidity range	20-80%, no condensation
Operating system	Built-in
User interface	320 x 240 touch screen graphic LCD
Input voltage	110 - 220 VAC
Frequency	50 / 60 Hz
UV sterilization	5 minute cycle, 48.96 mJ/cm energy max 2
Communications	TCP / IP
Heat block	40 - 95 °C
Cool block	4 °C



Contact

Bioneer Corporation
49-3 Munpyeong-dong,
Daedeok-gu, Daejeon 306-220,
South Korea
Phone: +82-42-930-8777
Fax: +82-42-930-8688
Email: sales@bioneer.com

Bioneer, Inc.
1000 Atlantic Avenue,
Alameda, CA 94501 USA
Toll free : 1-877-264-4300
Fax : 1-510-865-0350
E-mail: order.usa@bioneer.com

Bioneer Trade (Shanghai) Co., Ltd.
403 Room, Building 88, no.887,
Zuchongzhi Road, Zhangjiang High Tech Park,
PuDong New District, Shanghai 201203, China
Tel: +86-21-5080-0969
Fax: +86-21-5080-1620
E-mail: ascn@bioneer.com

Seoul Office
412, DMC High-Tech Industrial Center,
1580, Sangam-dong, Mapo-gu, Seoul, Korea
Phone: +82-2-598-1094
Fax: +82-2-598-1096